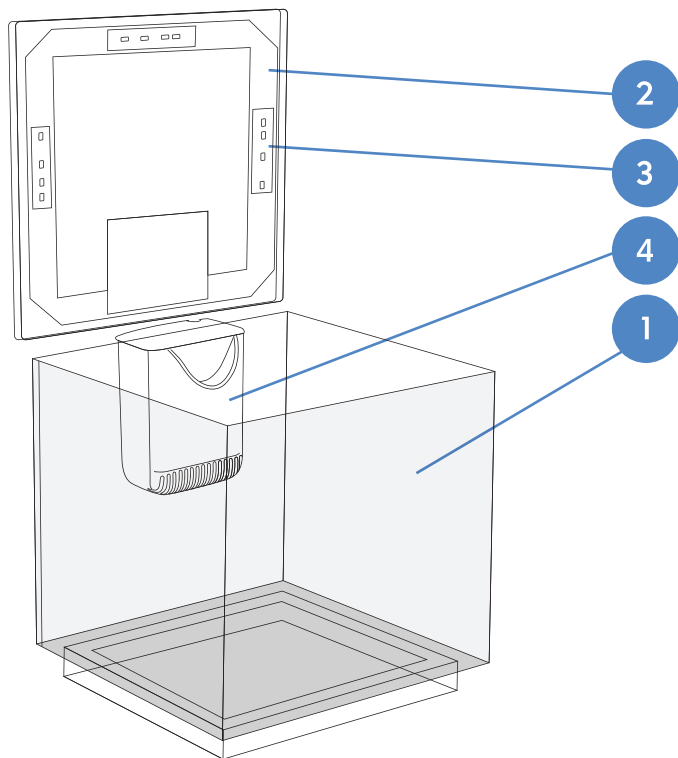


# GETTING TO KNOW YOUR AQUARIUM



Part No.	Part Description
1	AquaCube LED Aquarium
2	AquaCube LED Hood
3	Integrated LED
4	Filter

	Spares code
Filter Cartridge	1 Month: 2317 3 Month: 2318
Phosphate	
Replacement Filter	2311
Replacement LED	-

**Filter is noisy:**  
Solution: The impellor should be removed and carefully cleaned, see three monthly care routine in the maintenance section of the Quick Start Guide. Once the impellor has been cleaned it should be inspected for any damage. If the impellor or magnet is damaged in any way, the impellor should be replaced.

**Water will not stay crystal clear:**  
Solution 1: If the aquarium does not contain large, messy fish check to ensure the cartridge filter is working correctly, inspect the white polymer wool cartridge to see it is correctly positioned in the key locator and if it was replaced within 28 days (if not it should be replaced)  
Solution 2: Additionally, you may consider using Interpet Quick Clear which clumps together the fine particles and allows them to be removed more effectively by the filter. Additionally, cut down on feeding for two-three days and ensure you perform monthly water changes.

**Filter flow runs over the top of the filter cartridge prematurely:**  
Solution : See Solution 1 from "Water will not stay crystal clear"

**For any further problems, contact the Interpet Customer Care Department at:**  
customercare@interpet.co.uk

**Filter flow rate drops considerably:**  
Solution 1: check for dirt and debris around the intake section and the inlet pipe, and remove. If this does not solve the flow rate problem, check the impellor (see "Filter is noisy")  
Solution 2: The cartridge filter design is specifically built around easy access to replace the filter cartridges, the means the outflow is powered by gravity which can appear slower than other internal power filters. In reality this filter type delivers the same if not more flow than conventional internal power filters, but the way it is returned via the water return cascade can appear less, however it works just as effectively in filtration.

**Why is the LED light output reducing?**  
Solution: refer to 'Why has the LED lighting stopped working?', if this does not work, the LED light may be nearing the end of its life span and will need replacing.

**Power cut**  
Solution: Any interruption of more than 2-3 hours of the water supply through the filter will lead to a die-off of some of the beneficial filter bacteria. Should this occur, do not simply re-start the filter. You should rinse and change the filter media as per the monthly maintenance regime. In an aquarium fully stocked with fish the die-off may lead to water quality problems, these should be monitored using test kits, and the filter supported by use of a filter bacteria aid – such as Interpet Fast Filter Start.

**Why has the LED lighting stopped working?**  
Solution: Check all plugs are firmly pushed into sockets. Check connection of low voltage plug to the LED unit. Check the mains power supply has not been interrupted.

## TROUBLESHOOTING

## IMPORTANT SAFEGUARDS

### READ AND FOLLOW ALL SAFETY INSTRUCTIONS

**WARNING:** to guard against injury, basic safety precautions should be observed, including the following guidelines:

**DANGER:** To avoid possible electrical shock, special care should be taken since water is employed in the use of aquarium equipment. For each of the following situations, do not attempt repairs yourself, return the appliance to an authorized service facility for service, or discard the appliance.

This is for indoor use only – do not use outside. Do not use this unit if the cable or plug are damaged or appear to be malfunctioning, or if it is dropped or damaged in any manner. Do not use this unit if the plug gets wet. Refer to section 3 of this instruction manual to find out how to create a drip loop for both the heater and filter. Dispose of responsibly following instructions from your authority. Close supervision is necessary when any appliance is used by or near children. Do not install or store the appliance where it will be exposed to the weather or to temperatures below freezing point. If an extension cord is necessary, a cable rated with a proper rating should be used. A cable rated for less amperes or watts than appliance rating may cause the appliance to overheat. Care should be taken to arrange the cable so that it will not be tripped over or pulled.

Disposal of used Electrical and Electronic Equipment (Applicable in the European Union and other European countries with separate collection systems)

This symbol on the product or on it's packaging indicates that the product must not be disposed of with normal household waste. Instead, it is your responsibility to dispose of your waste equipment by arranging to return it to a designated collection point for the recycling of waste electrical and electronic equipment. By separating and recycling your waste equipment at the time of disposal you will help to conserve natural resources and ensure that the equipment is recycled in a manner that protects human health and the environment. For more information about recycling the product, please contact your local city office, your household waste disposal service or the shop where you have purchased the product.



## SAVE THESE INSTRUCTIONS

## GUARANTEE

All AquaCube LED aquariums are guaranteed for 12 months from the date of purchase providing the following conditions are met.

Never place polystyrene under the bottom of this aquarium.

Your aquarium must be sited on a surface that is flat and level and able to withstand the weight of the aquarium when filled with water, gravel etc. Note: 1 litre of water weighs 1kg).

Wrought iron and angle iron stands, together with video, HIFI, TV cabinets, articles of furniture and self-assembly furniture are NOT suitable for use with AquaCube aquariums.

All aquarium/stand locations should take into account the position of floor boards/joists etc., bearing in mind the weight to be supported.

The sealant on the aquarium must not come into contact with any chemicals (i.e. Household bleach etc.) or sharp objects such as rocks and razor edged algae scrapers. Normal aquarium treatments and fish medications used for the purpose of fish keeping do not effect the aquarium silicone.

**IMPORTANT SAFETY ADVICE:** Never site your aquarium over electrical appliances and never lift the aquarium by the top frame (if fitted) or by any part of the bracing system.

**DO NOT** try to lift or move the aquarium when it contains water.

This guarantee covers leakages arising from either faulty materials or workmanship. We cannot be responsible for breakages of glass.

This guarantee does not apply to any unauthorised modifications or misuse, improper or inadequate maintenance, or operations outside the product specifications. In case of defect within the stated guarantee period, the products should be returned, with proof of purchase, to the point of purchase.

This guarantee does not effect your statutory. Guarantee service includes repair or replacement of the aquarium at Interpet Ltd.'s discretion. Neither Interpet nor the manufacturer are liable for any direct, indirect, special, incidental or consequential damage, including loss of livestock, arising from a defect in this product.

### CF Cartridge Packs

- Replace monthly to keep your aquarium clean, healthy and algae free.
- Cartridges available in 1 & 3 month packs. Code 2317 & 2318.



### New Aquarium Start Up Kit

- Simply and successfully start your new aquarium for your fish.
- Easy to follow, step by step guide.



Interpet has applied over 65 years of aquatic experience to ensure every element of the design of this product has been carefully considered to help you enjoy aquarium keeping.

Email: [customercare@interpet.co.uk](mailto:customercare@interpet.co.uk)  
Interpet Ltd., Vincent Lane, Dorking, Surrey, RH4 3YX, England  
[facebook.com/interpet](https://www.facebook.com/interpet)

[www.interpet.co.uk](http://www.interpet.co.uk)

Leaflet code 25/09/19 AN

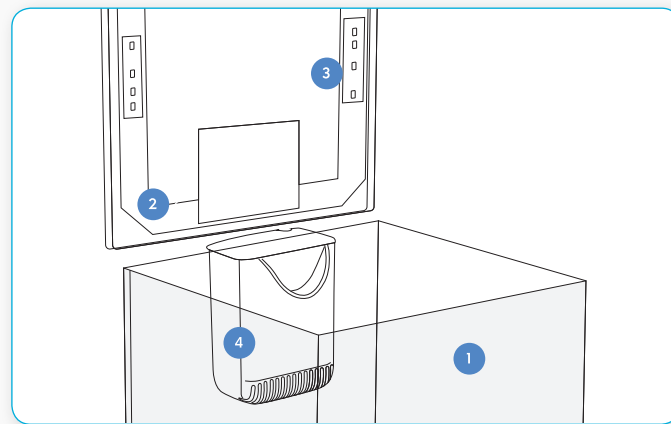


## AQUACUBE LED

### Quick Start Guide



## 1. PART CHECKS



Part No.	Part Description
1	AquaCube LED Aquarium
2	AquaCube LED Hood
3	Integrated LED
4	Filter

## 2. AQUARIUM LOCATION

Ensure the aquarium is placed on a level surface suitable for bearing the weight of a full aquarium (e.g. the AquaCube 28 litre will weigh close to 40kg when full).

Position the aquarium where you can get maximum enjoyment from watching your aquatic habitat. However, the aquarium should NOT be placed:

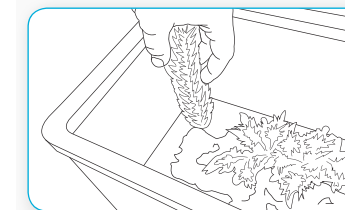
• In direct sunlight

• In areas of extreme temperature variations i.e. next to a radiator, or a draughty door

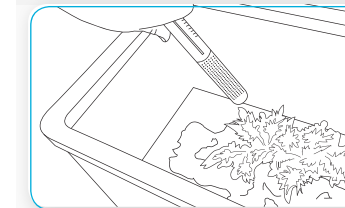
• In areas subject to loud noise, vibration or a lot of movement e.g. by a loud speaker or in the hallway

## 3. AQUARIUM SETUP

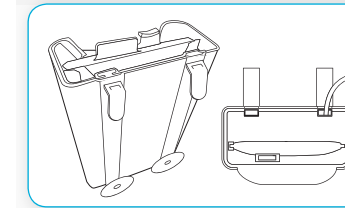
A. Pre-wash and fill aquarium with décor, rocks and gravel.



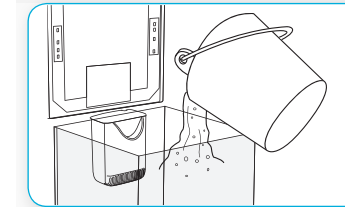
B. Install optional heater (not included) for tropical fish. DO NOT TURN ON YET



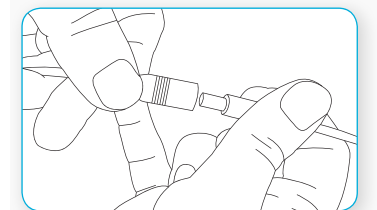
C. Attach locator hooks into the top holes of the back of Internal Filter and fit onto back of tank. DO NOT TURN ON YET.



D. You can then fill your aquarium with tap water treated with Interpet Tapsafe water dechlorinator.



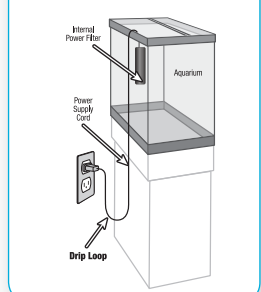
E. Attach the low voltage transformer to the LED aquarium light.



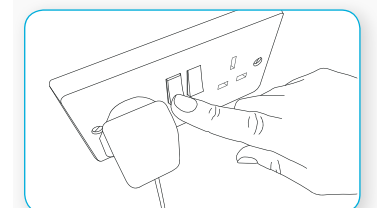
### Important safety information

To prevent any drips entering electrical socket, create a drip loop for the filter, heater (if applicable) and LED cable.

### Create a drip loop



F. Then when safe to do so, turn on equipment and allow the aquarium to settle overnight.

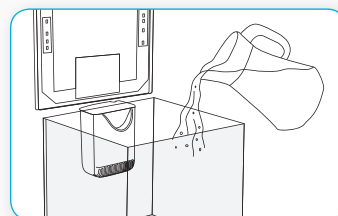


G. Next day, add live plants and then visit [www.interpet.co.uk](http://www.interpet.co.uk) to find out how to successfully introduce fish.

## 4. MAINTENANCE ROUTINE

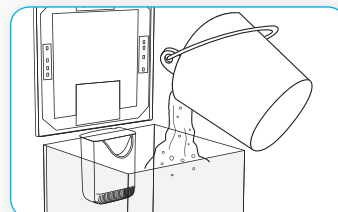
### A. Daily care

- Ensure the filter is working correctly.
- Feed & check fish health
- Always remove dead fish
- Check Water temperature is stable



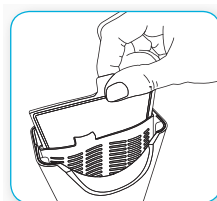
### B. Weekly Care

- Top up any water evaporation in the aquarium
- For live plants, add a plant food
- Clean the LED with a soft cloth
- Use a test kit to reveal any potential water quality issues
- Clean front glass with cloth or magnet cleaner



### C. Monthly care

- Conduct a 25% water change
- Replace fine filter floss cartridge
- Replace phosphate remover pad (if included)

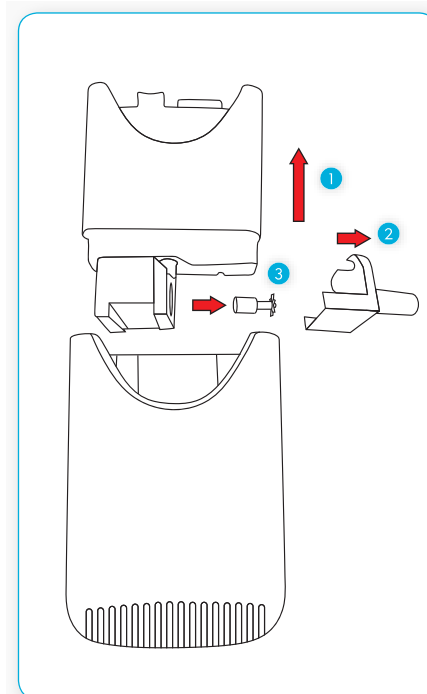


### D. 3 Monthly care

- Remove pump & impellor, clean in freshwater

### E. Annual care

- Check impellor for wear and tear, replace as necessary



## 5. TOP TIPS FOR A HEALTHY AND SUCCESSFUL AQUARIUM

1. Locate your aquarium in a suitable position for the benefit of the fish and plants, and for your maximum enjoyment.
2. Select the correct amount and correct species of fish for a balanced and calm community.
3. Care for your water; do the recommended water changes, filter cleaning, tests and feed correctly, taking special care in the early days or when adding new fish.
4. Don't rush the early days, start slowly and carefully for long term success.
5. ENJOY YOUR AQUARIUM!

**ALWAYS TURN OFF POWER  
TO YOUR FILTER WHEN CARRYING  
OUT MAINTENANCE**



Interpet has applied over 65 years of aquatic experience to ensure every element of the design of this product has been carefully considered to help you enjoy aquarium keeping.

Email: [customercare@interpet.co.uk](mailto:customercare@interpet.co.uk)  
Interpet Ltd., Vincent Lane, Dorking, Surrey, RH4 3YX, England  
[facebook.com/interpet](https://facebook.com/interpet)

[www.interpet.co.uk](http://www.interpet.co.uk)