

GETTING TO KNOW YOUR AQUARIUM

Part No.	Part Description
1	Glass Aquarium
2	Aquarium Hood
3	LED Aquarium Light
4	Internal Filter: 70L: CF 2 100L: CF2 120L: CF3
5	Interpet Bioactive Tapwater

Part Description	Spares code		
	70 Litre	100 Litre	120 Litre
Filter Cartridge	1 Month: 2319	1 Month: 2321	1 Month: 2321
	3 Month: 2320		
Phosphate			
Replacement Impeller	36636		2314
Replacement LED		0466	0467

IMPORTANT SAFEGUARDS

READ AND FOLLOW ALL SAFETY INSTRUCTIONS

WARNING: to guard against injury, basic safety precautions should be observed including the following guidelines:

DANGER: to avoid possible electric shock, special care should be taken since water is employed in the use of aquarium equipment. For each of the following situations, do not attempt repairs yourself, return the appliance to an authorised service facility for service, or discard the appliance.

This product is for indoor use only – do not use outside. Do not use this unit if the cable or plug are damaged or appear to be malfunctioning, or if it is dropped or damaged in any manner. Do not use this unit if the plug gets wet. Refer to section 3: Aquarium Set-up to find out how to create a drip loop for the cables of appliances used in this aquarium. Dispose of responsibly following instructions from your local authority. Close supervision is necessary when any appliance is used by or near children. Do not install or store the appliance where it will be exposed to the weather or to temperatures below freezing point. If an extension cord is necessary, a cable rated with a proper rating should be used. A cable rated for less amperes or watts than the appliance rating may cause the appliance to overheat. Care should be taken to arrange the cable so that it will not be tripped over or pulled.

Disposal of used Electrical and Electronic Equipment (Applicable in the European Union and other European countries with separate collection systems)

This symbol on the product or on its packaging indicates that the product must not be disposed of with normal household waste. Instead, it is your responsibility to dispose of your waste equipment by arranging to return it to a designated collection point for the recycling of waste electrical and electronic equipment. By separating and recycling your waste equipment at the time of disposal you will help to conserve natural resources and ensure that the equipment is recycled in a manner that protects human health and the environment. For more information about recycling the product, please contact your local city office, your household waste disposal service or the shop where you have purchased the product.



SAVE THESE INSTRUCTIONS

GUARANTEE

All Aquaverse Vision LED aquariums are guaranteed for 12 months from the date of purchase providing the following conditions are met.

Never place polystyrene under the bottom frame of this aquarium.

Your aquarium must be sited on a surface which is flat and level, and able to withstand the weight of the aquarium when filled with water, gravel etc. Note 1 litre of water weighs 1kg.

You must use the correct Interpet stand so as not to invalidate your guarantee. All aquarium/stand locations should take into account the position of floor boards/joists etc., bearing in mind the weight to be supported.

The sealant on the aquarium must not come into contact with any chemicals (i.e. household bleach etc.) or sharp objects such as rocks and razor edged algae scrapers. Normal aquarium treatments and fish medications used for the purpose of fishkeeping do not affect the aquarium silicone.

IMPORTANT SAFETY ADVICE: Never site your aquarium over electrical appliances and never lift the aquarium by the top frame (if fitted), or by any part of the bracing system.

DO NOT try to lift or move the aquarium when it contains water. This guarantee covers leakages arising from either faulty materials or workmanship. We cannot be responsible for the breakages of glass.

This guarantee does not apply to any unauthorised modifications or misuse, improper or inadequate maintenance, or operations outside the product specifications. In case of defect within the stated guarantee period, the products should be returned, with proof of purchase, to the point of purchase.

The guarantee does not affect your statutory rights. Guarantee service includes repair or replacement of the aquarium at Interpet Ltd.'s discretion. Neither Interpet, nor the manufacturer, are liable for any direct, indirect, special, incidental or consequential damages, including loss of livestock, arising from this product.

Service Packs

One and three month service packs available for your internal cartridge filter CF2 & CF3.



TapSAFE

A unique and advanced formulation developed in conjunction with global leaders in Biotechnology. It removes chlorine, chloramines and heavy metals and this in turn even allows hot tap water to be used as part of a water change mix. An Aloe Vera protective colloid within TapSAFE creates a barrier around the fish's delicate skin and gill membranes. As an added feature it also adds a culture of bacteria and enzymes that consume any excess biological waste in the aquarium and boosts filter performance.



New Aquarium Start Up Kit

- Simply and successfully start your new aquarium for your fish.
- Easy to follow, step by step guide.



Interpet has applied over 65 years of aquatic experience to ensure every element of the design of this product has been carefully considered to help you enjoy aquarium keeping.

Email: customercare@interpet.co.uk
Interpet Ltd., Vincent Lane, Dorking, Surrey, RH4 3YX, England
[facebook.com/interpet](https://www.facebook.com/interpet)

www.interpet.co.uk

Leaflet code 08/10/19 AN

Power cut
Solution: Any interruption of more than 2-3 hours of the water supply through the filter will lead to a die-off of some of the beneficial filter bacteria. Should this occur, do not simply re-start the filter. You should rinse and change the filter media as per the monthly maintenance regime. In an aquarium fully stocked with fish the die-off may lead to water quality problems, these should be monitored using test kits, and the filter supported by use of a filter bacteria aid – such as Interpet Fast Filter Start.

Why has the LED lighting stopped working?
Solution: Check all plugs are firmly pushed into sockets. Check connection of low voltage plug to the LED unit. Check the mains power supply has not been interrupted.

Why is the LED light output reducing?
Solution: refer to 'Why has the LED lighting stopped working?', if this does not work, the LED light may be nearing the end of its life span and will need replacing. Refer to the 'Getting to know your aquarium' section for the relevant spares codes and purchase the correct replacement LED.

Filter flow rate drops considerably:
Solution 1: check for dirt and debris around the clip on the intake cage and the inlet pipe, and remove. If this does not solve the flow rate problem, check the impeller (see "Filter is noisy")
Solution 2: The cartridge filter design is specifically built around easy access to replace the filter cartridges, the means the outflow is powered by gravity which can appear slower than other internal power filters. In reality the CF filter range delivers the same if not more flow than conventional internal power filters.

Filter is noisy:
Solution: The impeller should be removed and carefully cleaned, see three monthly care routine in the maintenance section of the Quick Start Guide. Once the impeller has been cleaned it should be inspected for any damage. If the impeller or magnet is damaged in any way, the impeller should be replaced.

Water will not stay crystal clear:
Solution 1: If the aquarium does not contain large, messy fish check to ensure the cartridge filter is working correctly, inspect the white polymer wool cartridge to see it is correctly positioned in the key locator and if it was replaced within 28 days (if not it should be replaced)
Solution 2: Additionally, you may consider using Interpet Quick Clear which clumps together the fine particles and allows them to be removed more effectively by the filter. Additionally, cut down on feeding for two-three days and ensure you perform monthly water changes.

Filter flow runs over the top of the filter cartridge prematurely:
Solution 1: The cartridge filter must be positioned in the aquarium no higher than the 'Max water line' located on the front of the filter body. This ensures sufficient head height for water flow to pass through a new filter cartridge before it becomes blocked by dirt and debris over the specified 28-day filtration period.
Solution 2: see Solution 1 from "Water will not stay crystal clear"

For any further problems, contact the Interpet Customer Care Department at: customercare@interpet.co.uk

TROUBLESHOOTING

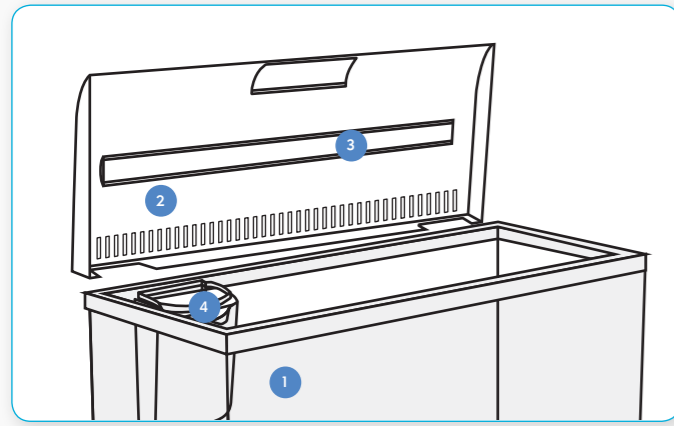


Aquaverse Vision LED

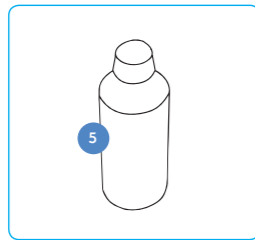
Quick Start Guide



1. PART CHECKS



Part No.	Part Description
1	Glass Aquarium
2	Aquarium Hood
3	LED Aquarium Light
4	Internal Filter: 70L: CF 2 100L: CF2 120L: CF3
5	Interpet Bioactive Tapsafe



2. AQUARIUM LOCATION

Ensure the aquarium is placed on a level surface suitable for bearing the weight of a full aquarium (e.g. the Aquaverse Vision 70 litre will weigh close to 100kg when full); a matching cabinet should be used (if available).

Position the aquarium on its cabinet (if applicable) where you can get maximum enjoyment from watching your aquatic habitat. However, the aquarium should NOT be placed:

- In direct sunlight
- In areas of extreme temperature variations i.e. next to a radiator, or a draughty door
- In areas subject to loud noise, vibration or a lot of movement e.g. by a loud speaker or in the hallway

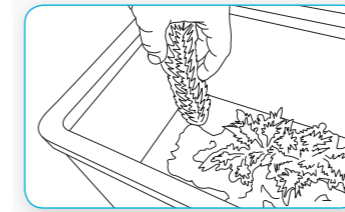
3. AQUARIUM LIGHTING CONTROL

Aquaverse Vision LED aquariums come complete with a powerful Blue and White LED unit. The inline controller allows for Blue and White LEDs to turn on together for a balanced daytime effect. Also the Blue LEDs can be turned on by their own for a Blue Moonlight effect, perfect for evening viewing. The inline switch also has the option that all the LEDs can be turned off the same time.

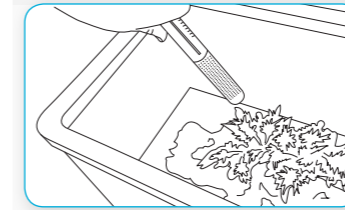
If using a standard household timer, it will automatically turn off both the white and blue LEDs together each day. We recommend 10 hours on and 14 hours off for lush plant growth without encouraging algae.

4. AQUARIUM SETUP

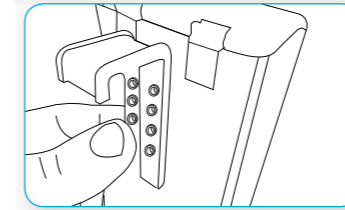
A. Pre-wash and fill aquarium with décor, rocks and gravel.



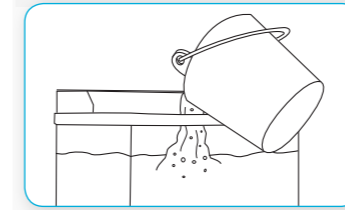
B. Install optional heater (not included) for tropical fish. DO NOT TURN ON YET



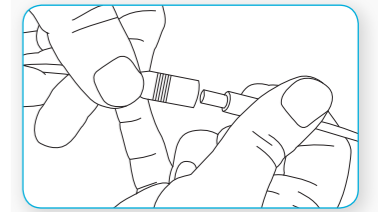
C. Attach locator hook onto Internal Filter and fit onto the aquarium frame – lining up with the cut outs in the hood. DO NOT TURN ON YET. Note: max water line shown on the filter. To adjust height change locator hook holes.



D. You can then fill your aquarium with tap water treated with Interpet Tapsafe water dechlorinator.



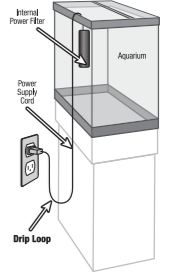
E. Attach the low voltage transformer to the LED aquarium light.



Important safety information

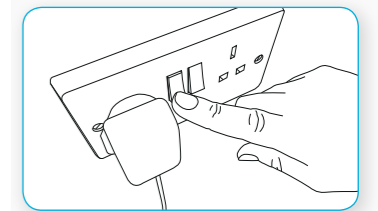
To prevent any drips entering electrical socket, create a drip loop for the filter, heater (if applicable) and LED cable.

Create a drip loop



F. Then when safe to do so, turn on equipment and allow the aquarium to settle overnight.

G. Next day, add live plants and then visit www.interpet.co.uk to find our how to successfully introduce fish.



5. MAINTENANCE ROUTINE

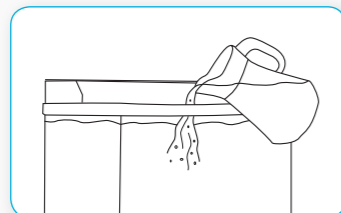
A. Daily care

- Ensure the filter is working correctly.
- Feed & check fish health
- Always remove dead fish
- Check Water temperature is stable



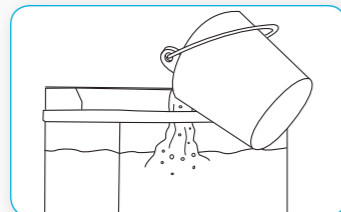
B. Weekly Care

- Top up any water evaporation from the aquarium
- For live plants, add a plant food
- Clean the LED with a soft cloth
- Use a test kit to reveal any potential water quality issues
- Clean front glass with cloth or magnet cleaner



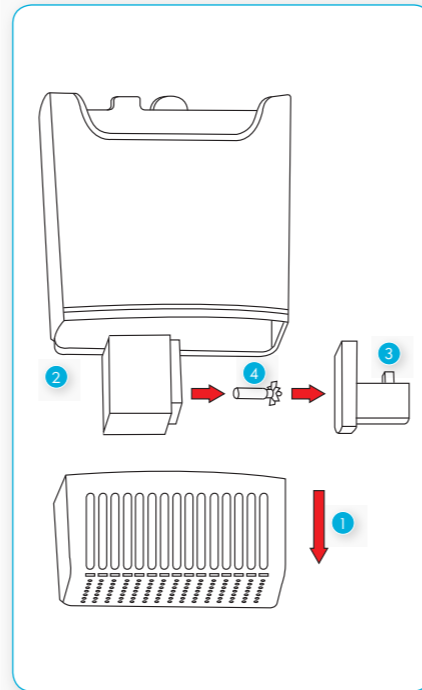
C. Monthly care

- Conduct a 25% water change, ideally whilst cleaning gravel with a gravel cleaner
- Replace fine filter floss cartridge
- Replace phosphate remover pad



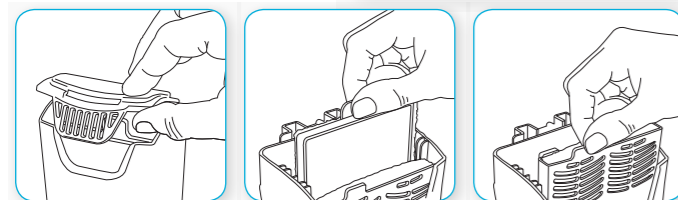
D. 3 Monthly care

- Remove intake cage (1, see diagram) & impellor (4), clean in freshwater



E. Annual care

- Check impellor (4) for wear and tear, replace as necessary



6. TOP TIPS FOR A HEALTHY AND SUCCESSFUL AQUARIUM

1. Locate your aquarium in a suitable position for the benefit of the fish and plants, and for your maximum enjoyment.
2. Select the correct amount and correct species of fish for a balanced and calm community.
3. Care for your water; do the recommended water changes, filter cleaning, tests and feed correctly, taking special care in the early days or when adding new fish.
4. Don't rush the early days, start slowly and carefully for long term success.
5. ENJOY YOUR AQUARIUM!

ALWAYS TURN OFF POWER TO YOUR FILTER WHEN CARRYING OUT MAINTENANCE



Interpet has applied over 65 years of aquatic experience to ensure every element of the design of this product has been carefully considered to help you enjoy aquarium keeping.

Email: customercare@interpet.co.uk
Interpet Ltd., Vincent Lane, Dorking, Surrey, RH4 3YX, England
[facebook.com/interpet](https://www.facebook.com/interpet)

www.interpet.co.uk