

# GETTING TO KNOW YOUR AQUARIUM

Spares		
Part Description	Kids Glow 16 litre	Kids Glow 30 litre
CF Mini Cartridge	Single: 2315 Triple: 2316	
Annual Replacement Impellor	2325	
Spare LED Light	90103	

Part No.	Part Description
1	Glass Aquarium
2	Aquarium hood
3	Kids Glow LED
4	Internal Power Filter
5	Cartridge Filter Location
6	Quick Setup Guide (not shown)
7	Glow Silicone
8	Glow Pen

# SAVE THESE INSTRUCTIONS

**WARNING:** To guard against injury, basic safety precautions should be observed, including the following guidelines:

**READ AND FOLLOW ALL SAFETY INSTRUCTIONS**

**DANGER:** To avoid possible electric shock, special care should be taken since water is employed in the use of aquarium equipment. For each of the following situations, do not attempt repairs yourself, return the appliance to an authorized service facility for service, or discard the appliance.

This is for indoor use only – do not use outside. Do not use this unit if the cable or plug are damaged or appear to be malfunctioning, or if it is dropped or damaged in any manner. Do not use this unit if the plug gets wet.

Refer to section 3 of this instruction manual to find out how to create a drip loop for both the heater and filter.

Dispose of responsibly following instructions from your local authority. Close supervision is necessary when any appliance is used by or near children. Do not install or store the appliance where it will be exposed to the weather or to temperatures below freezing point. If an extension cord is necessary, a cable rated with a proper rating should be used. A cable rated for less amperes or watts than the appliance rating may cause the appliance to overheat. Care should be taken to arrange the cable so that it will not be tripped over or pulled.

# IMPORTANT SAFETY INFORMATION

## TROUBLESHOOTING

### Problem 1: Power cut

**Solution:** Any interruption of more than 2-3 hours of the water supply through the filter will cause the bacteria in the filter to die. Should this occur, do not simply re-start the filter. You must thoroughly clean ALL the filter material and start the filter again. In an aquarium fully stocked with fish, this may lead to water quality problems. Use test kits to monitor water, Ammonia Remover & Quick Safe Start products to manage the water quality.

### Problem 2: Why has the LED lighting stopped working

**Solution:** Check all plugs are firmly pushed into sockets. Check connection of low voltage plug. Check mains power supply has not been interrupted.

### Problem 3: Why is the LED light output reducing / failing

**Solution:** Refer to problem 2, if this does not work the LED lighting tube is nearing the end of its life span and will need replacing. Refer to section 1 for the relevant Interpet spare codes and purchase a replacement tube.

### Problem 4: Why wont my glow pen write onto the aquarium glass?

**Solution 1:** Shake the glow pen for 2 minutes with the cap on. If it has not been used for a while this will need repeating.

**Solution 2:** If the nib is dry, it will need to be pressed down for a few seconds until the nib fills with ink.

**For Interpet Internal Power Filter troubleshooting, refer to the filter instructions.**

## GUARANTEE

All aquariums are guaranteed for 12 months from the date of purchase providing the following conditions are met.

Never place polystyrene under the bottom frame of this aquarium.

Your aquarium must be sited on a surface that is flat and level and able to withstand the weight of the aquarium when filled with water, gravel etc. Note: 1 litre of water weighs 1kg)

**IMPORTANT SAFETY ADVICE:** Never site your aquarium over electrical appliances.

**DO NOT** try to lift or move the aquarium when it contains water.

This guarantee covers leakages arising from either faulty materials or workmanship. We cannot be responsible for breakages of the polycarbonate pods.

This guarantee does not apply to any unauthorised modifications or misuse, improper or inadequate maintenance, or operations outside the product specifications. In case of defect within the stated guarantee period, the products should be returned, with proof of purchase, to the point of purchase.

This guarantee does not effect your statutory. Guarantee service includes repair or replacement of the aquarium or filter at Interpet Ltd.'s discretion. Neither Interpet nor the manufacturer are liable for any direct, indirect, special, incidental or consequential damages, including loss of livestock, arising from a defect in this product.



Interpet has applied over 60 years of aquatic experience to ensure every element of the design of this product has been carefully considered to help you enjoy aquarium keeping.



Interpet Ltd. Vincent Lane, Dorking, Surrey RH4 3YX, England

Email: [customercare@interpet.co.uk](mailto:customercare@interpet.co.uk)

[www.interpetaquatics.co.uk](http://www.interpetaquatics.co.uk)

Version 0001

# Interpet

## KIDS GLOW

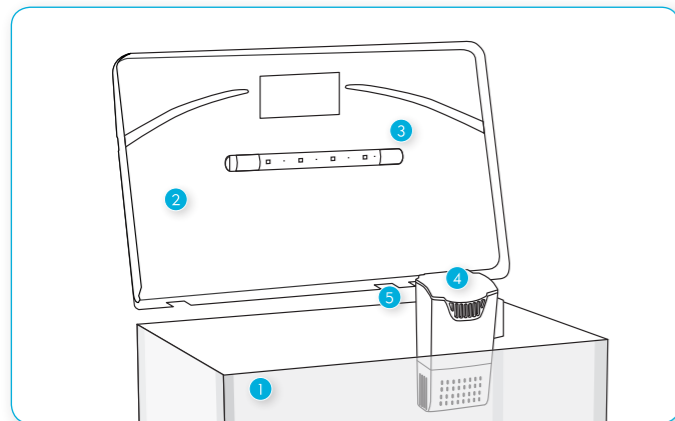
### Interactive aquarium

Instruction sheet  
& quick start up guide



QUICK  
SETUP GUIDE

## 1. PART CHECKS



Models 16 & 30 Litres

Part No.	Part Description
1	Glass Aquarium
2	Aquarium hood
3	Kids Glow LED
4	Internal Power Filter
5	Cartridge Filter Location
6	Quick Setup Guide (not shown)

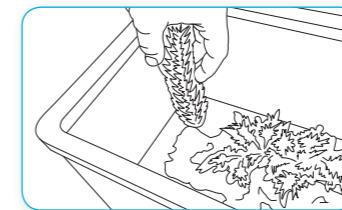
## 2. AQUARIUM LOCATION

- A. Ensure the aquarium is placed on a level surface suitable for bearing the weight of a full aquarium, eg. 25kg for an 16 litre aquarium.
- B. The aquarium should not be placed in direct sunlight, areas of extreme temperature change or areas subject to loud noise or vibration.
- C. The fluorescent glow silicone will glow in the dark for up to 30 minutes after the room's ambient light has been turned off. Use the Blue & White LED to recharge the silicone for the full glow effect.

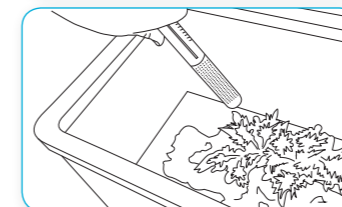


## 3. AQUARIUM SETUP

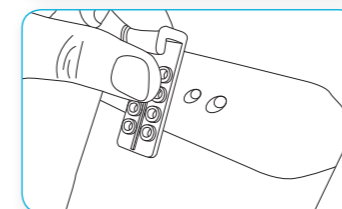
- A. Pre wash and fill aquarium with décor, rocks and gravel.



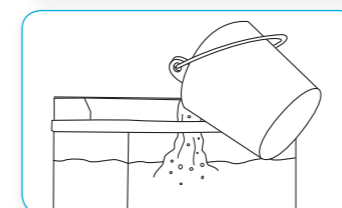
- B. Install optional heater (not included) for tropical fish. DO NOT TURN ON YET.



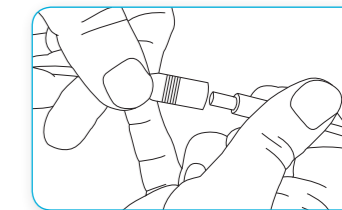
- C. Attached locator hook onto Internal Power Filter and fit onto the aquarium edge. DO NOT TURN ON YET.  
Note: Max water level line on the filter & filter location on hood.



- D. You can then fill your aquarium with tap water treated with Interpet Tapsafe water dechlorinator.



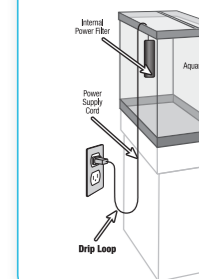
- E. Connect the low voltage transformer to the Kids Glow LED.



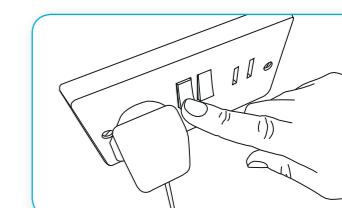
### Important safety information

To prevent any drips entering electrical socket, create a drip loop for the filter, heater and LED cable.

### Create a drip loop



- F. Then when safe turn on equipment and allow aquarium to settle overnight.



- G. Next day, add live plants and then introduce fish.

## 4. MAINTENANCE ROUTINE

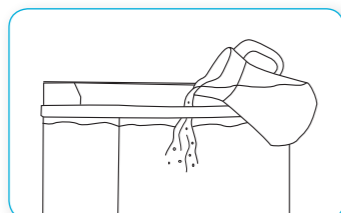
### A. Daily care

- Ensure the filter is working correctly
- Feed fish & check fish health
- Always remove dead fish
- Check water temperature is correct and stable



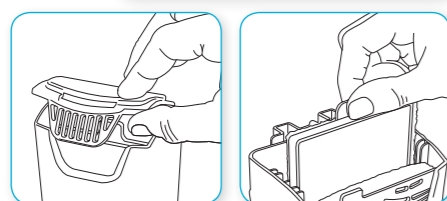
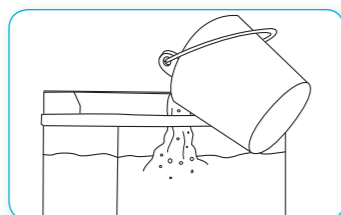
### B. Weekly care

- Top up any water evaporation in the aquarium
- For live plants, add a plant food
- Clean the Kids Glow LED with a soft cloth
- Use a test kit to reveal any potential water quality issues
- Clean front glass with cloth or magnet cleaner



### C. Monthly care

- Conduct a 25% water change
- Replace fine floss cartridge

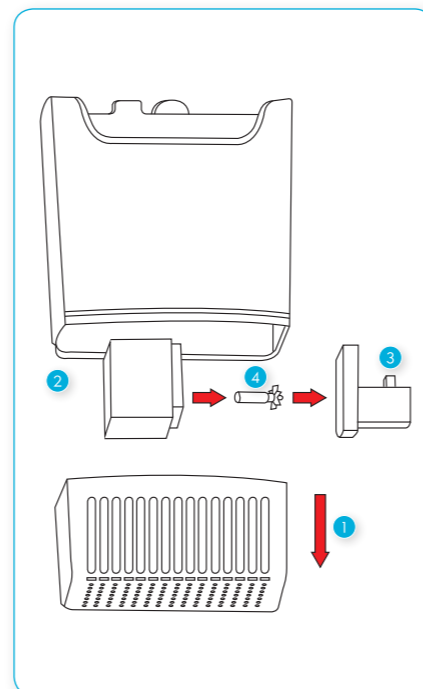


### D. 3 Monthly care

- Remove intake cage (1) & impellor (2-4), clean in freshwater

### E. Annual care

- Replace impellor (4)



**ALWAYS TURN OFF POWER TO YOUR FILTER WHEN CARRYING OUT MAINTENANCE**

## 5. TOP TIPS FOR A HEALTHY AND SUCCESSFUL AQUARIUM

1. Select the correct amount and correct species of fish for a balanced community.
2. Care for your water; do recommended water changes, filter cleaning, water testing and take special care when adding new fish.
3. Don't rush the early days, start slowly and carefully for long term success.
4. ENJOY YOUR AQUARIUM!
5. See online for further information on all aspects of keeping an aquarium and fishkeeping.

## NEED HELP?

To ensure aquarium success visit our website for support, advice and helpful top tips on our products and fishkeeping.

Email: [customercare@interpet.co.uk](mailto:customercare@interpet.co.uk)

[www.interpetaquatics.co.uk](http://www.interpetaquatics.co.uk)